

EXISTING SPACING ORDER MAP
(ALL 10-ACRE WELL DENSITY)

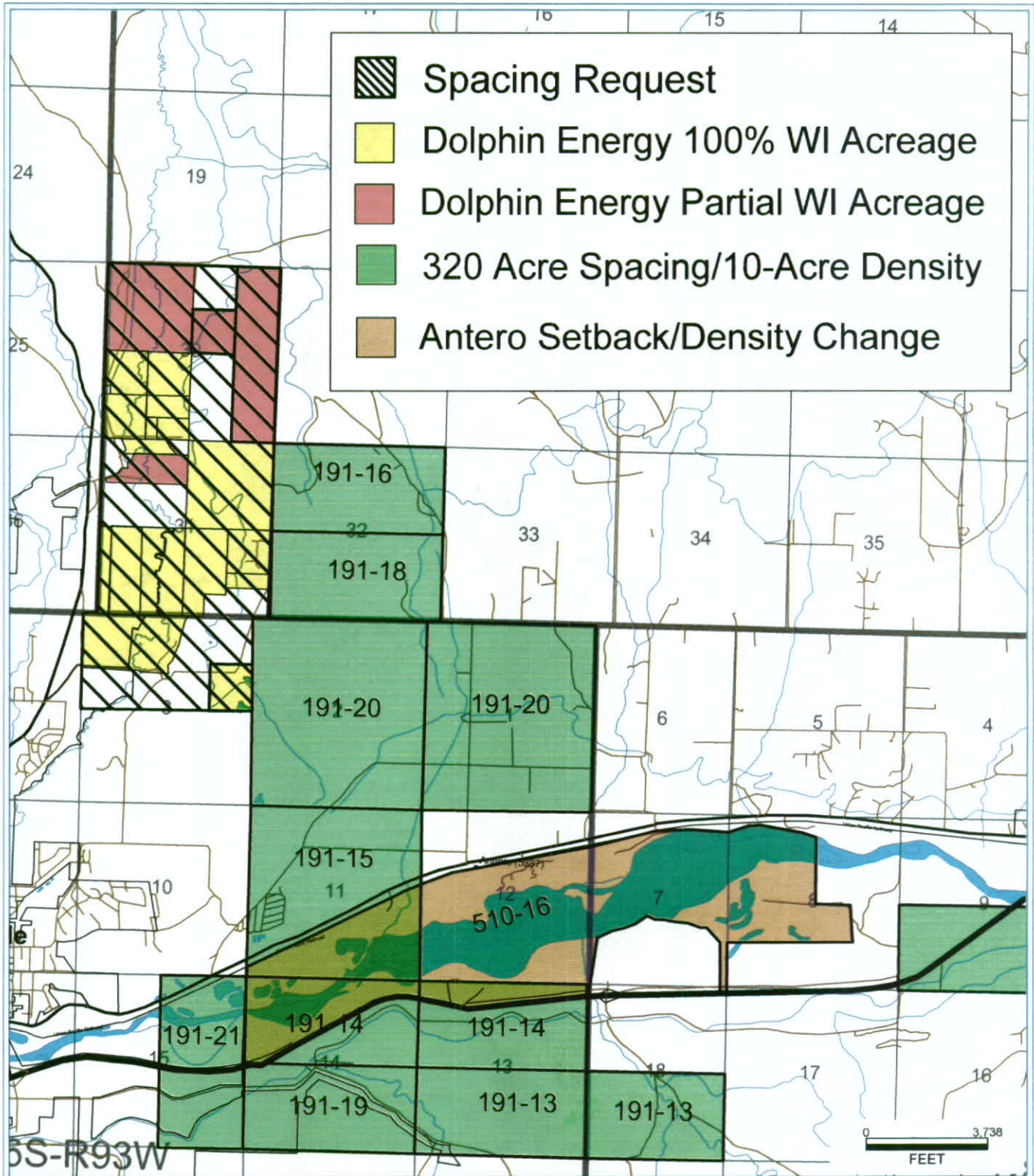
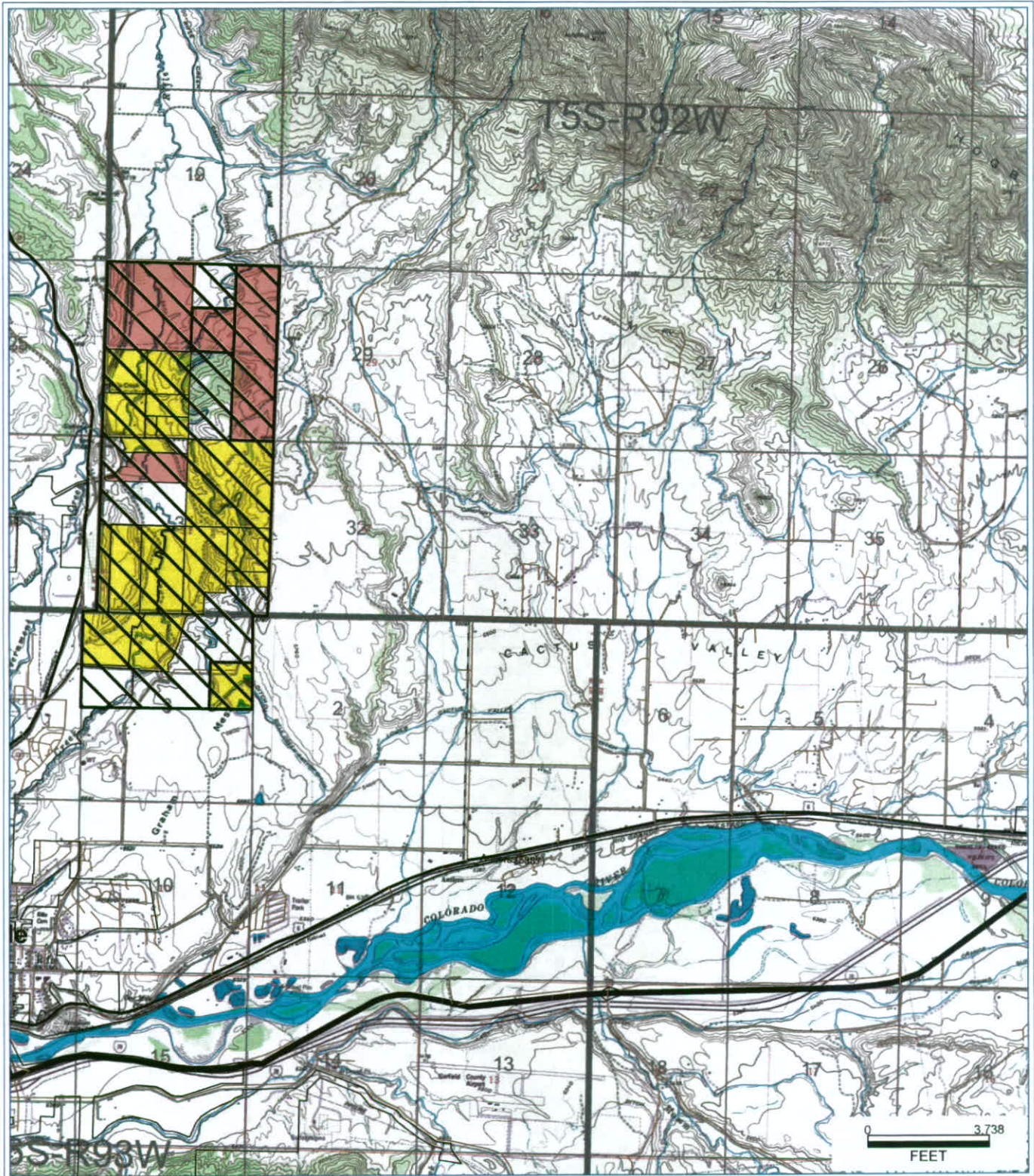


EXHIBIT B

APPLICANT: DOLPHIN ENERGY CORPORATION
GARFIELD COUNTY/UN-NAMED FIELD

CAUSE NO. 191
DOCKET NO. 0606-SP-25

TOPOGRAPHICAL MAP



PICEANCE BASIN SCHEMATIC CROSS SECTION

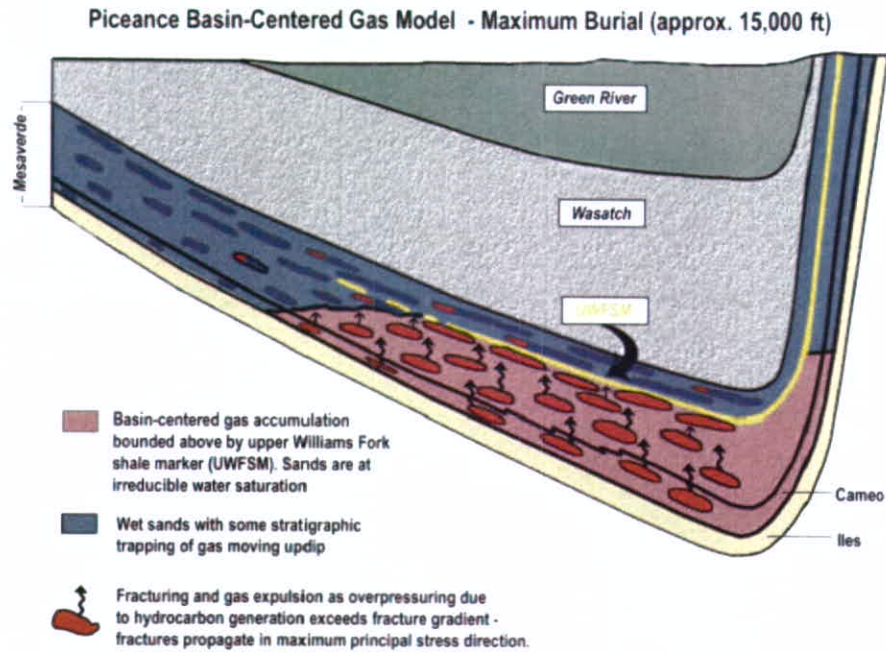
Stephen P. Cumella and Douglas B. Ostby

Figure 25. Basin-centered gas model for the Piceance Basin during maximum burial. Line of cross section shown on Figure 26.

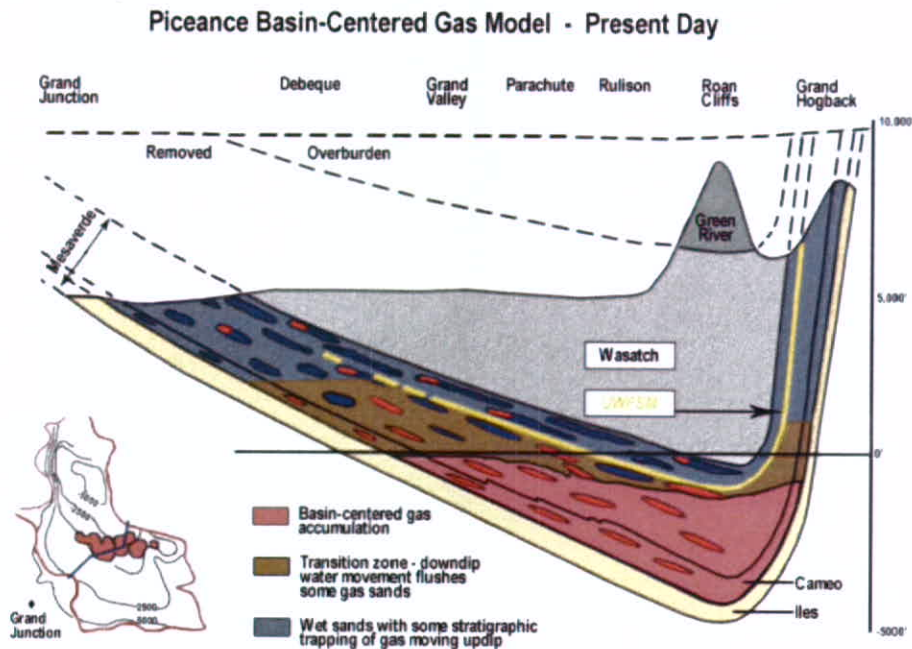


Figure 26. Basin-centered gas model for the Piceance Basin for present day. Line of cross section shown on inset map.

TYPE LOG

Stephen P. Camella

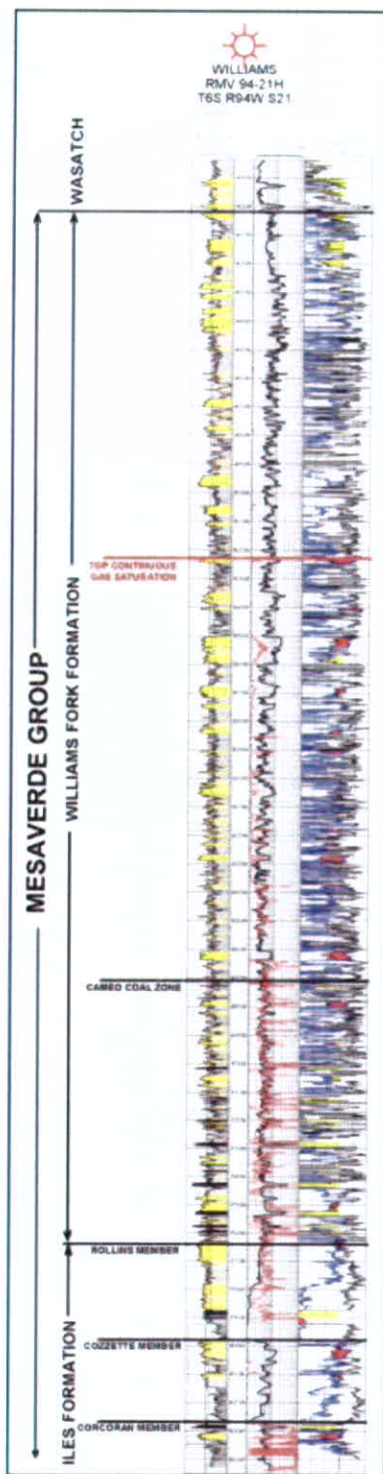


Figure 1. Type log for the Mesaverde Group in the Grand Valley, Parachute, and Rutson area.

FLUVIAL SYSTEM REPRESENTATION

Stephen P. Cumella and Douglas B. Ostby

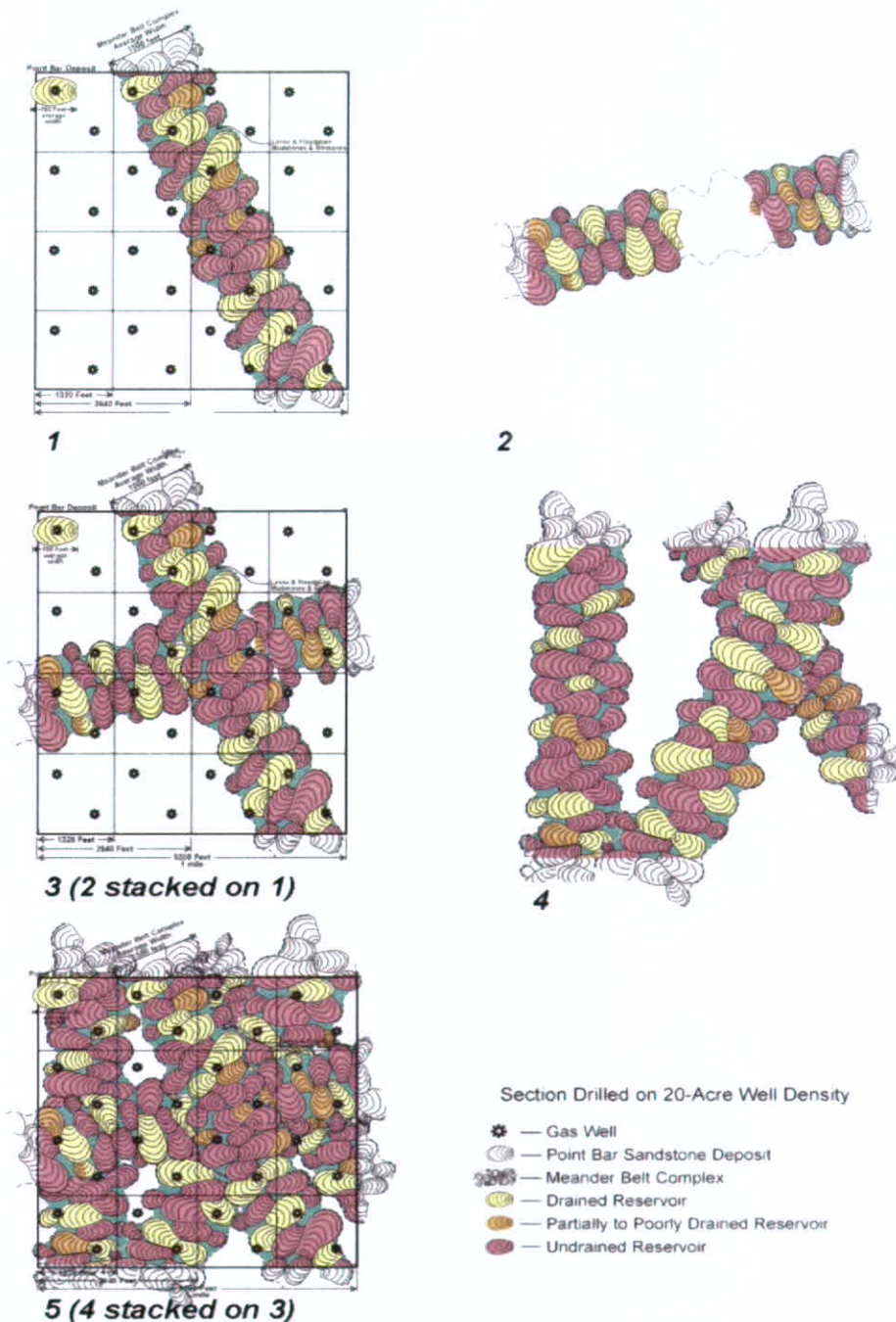
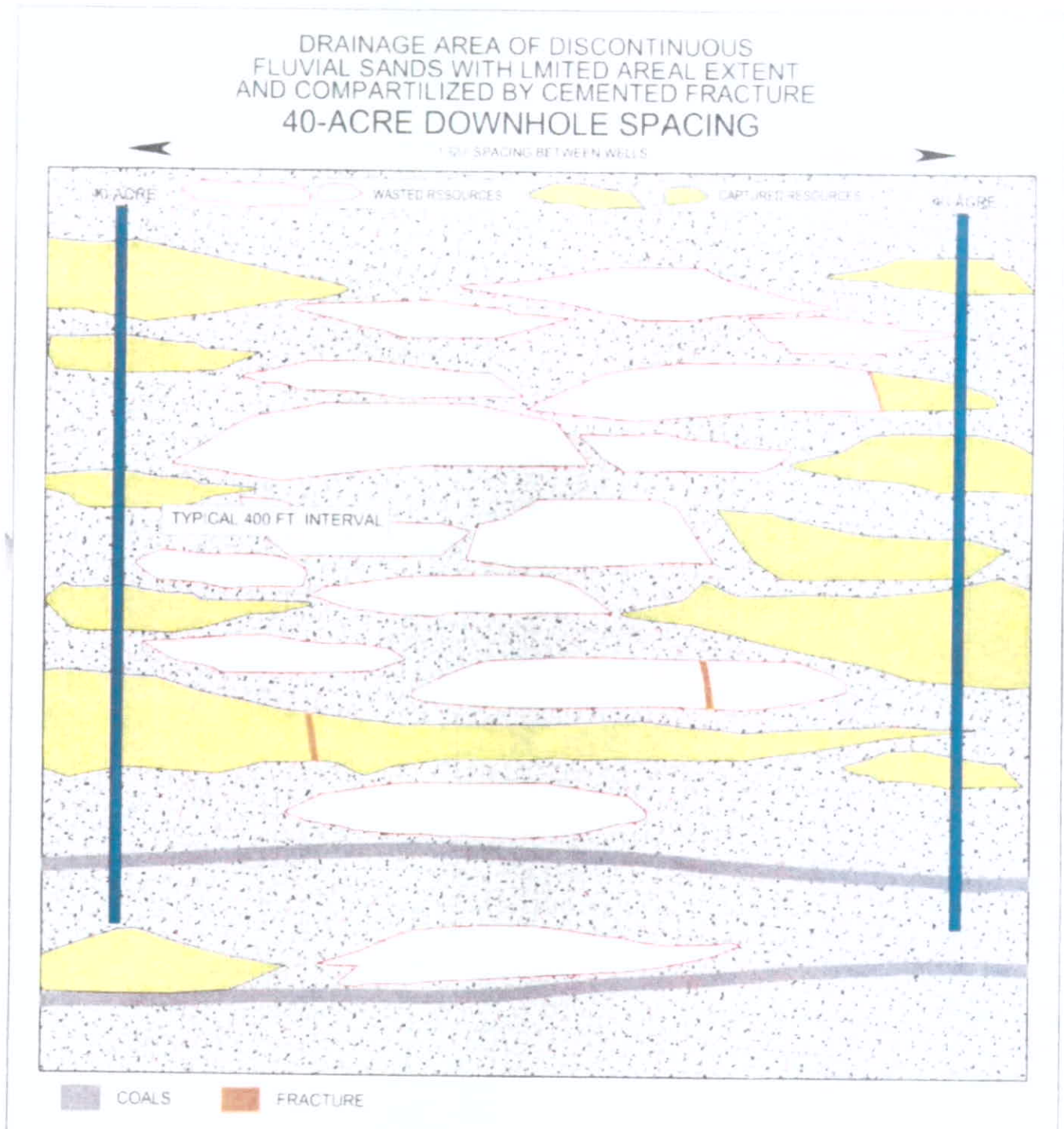


Figure 28. Stacking of hypothetical Williams Fork meanderbelt sandstone reservoirs showing the need for 10-acre density. Figure originally done by Terry Barrett.

WASTED RESOURCE ON 40-ACRE SPACING



WASTED RESOURCE AT 10 ACRE SPACING

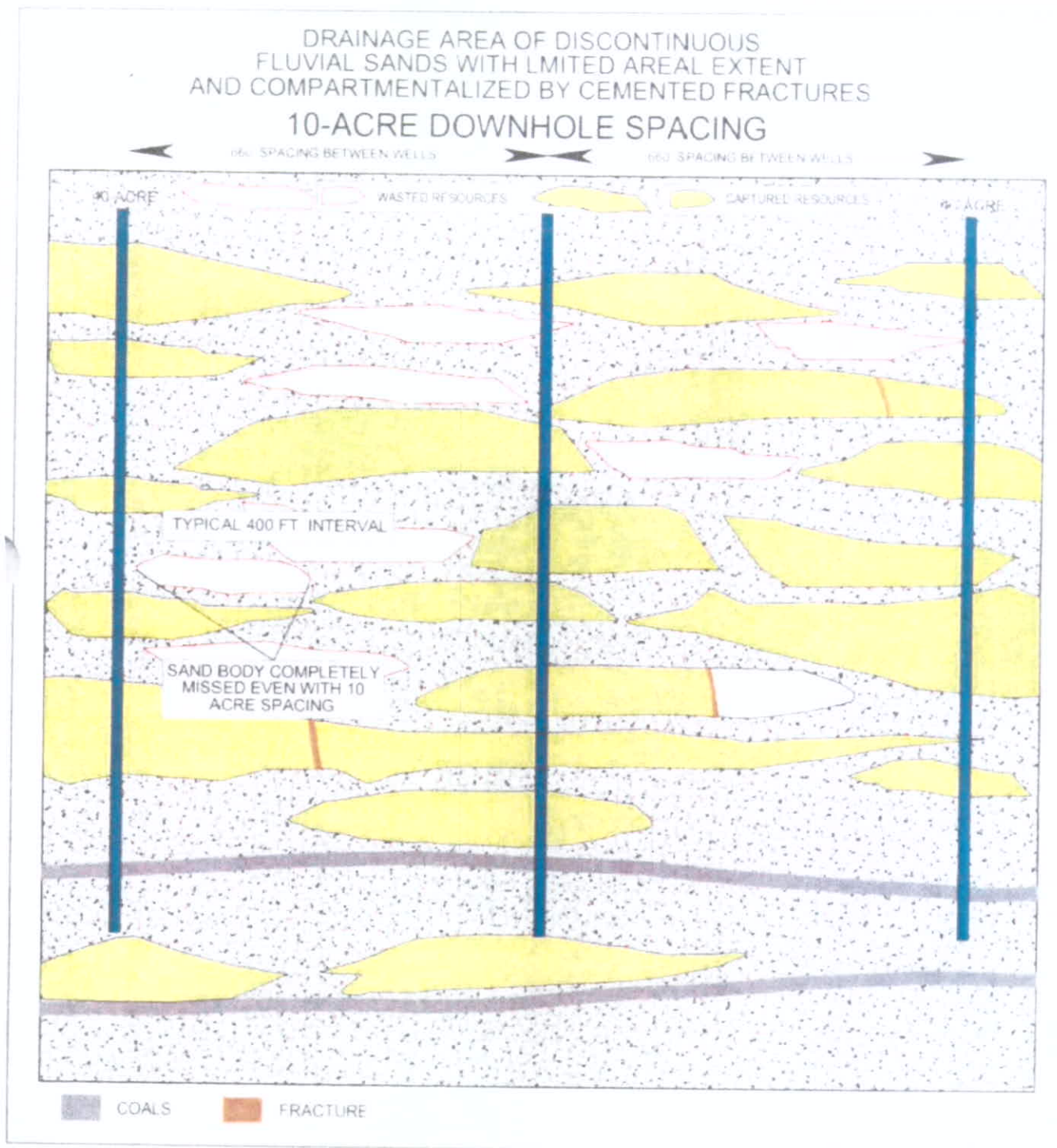
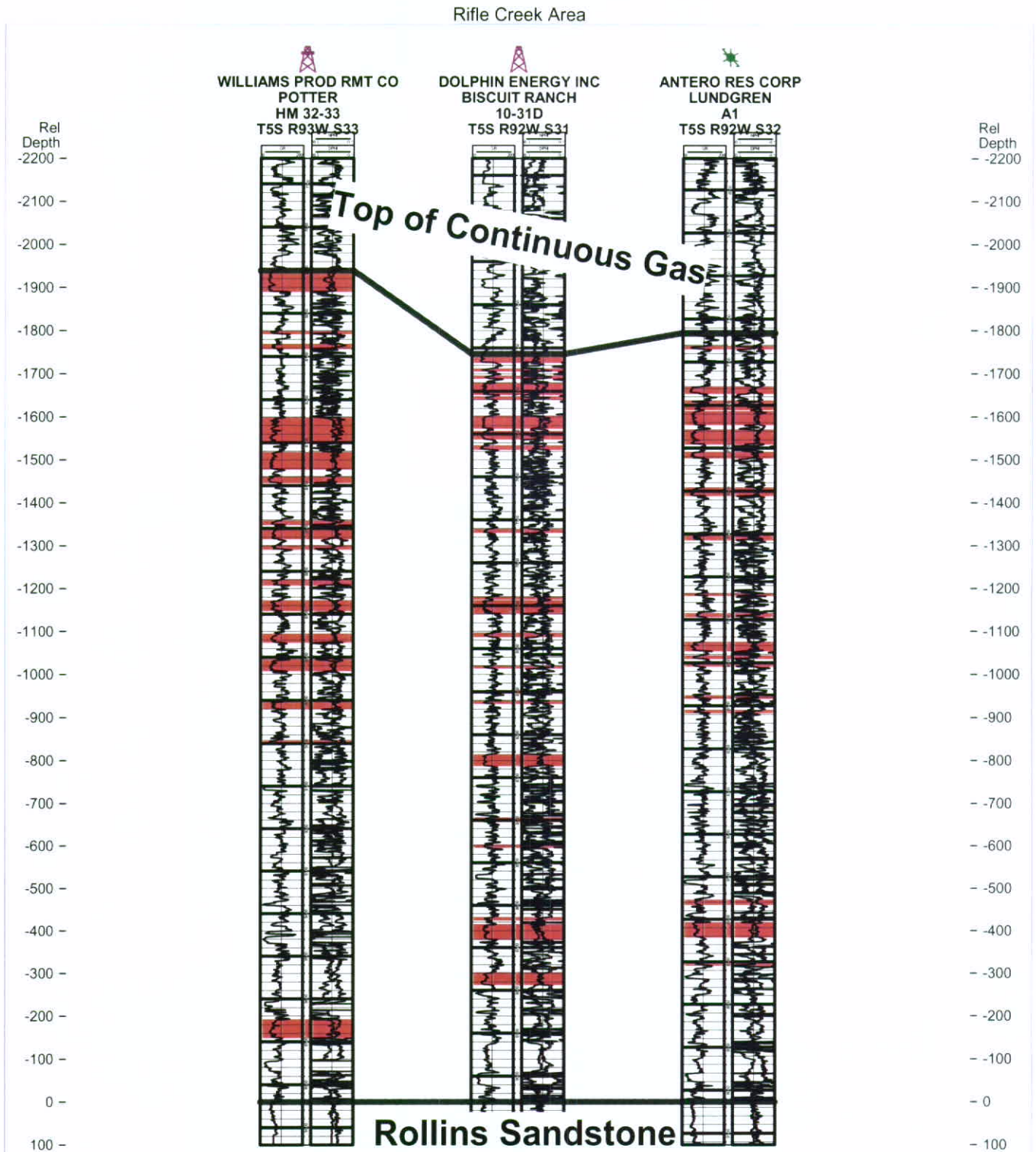


EXHIBIT J

APPLICANT: DOLPHIN ENERGY CORPORATION
GARFIELD COUNTY/UN-NAMED FIELD

CAUSE NO. 191
DOCKET NO. 0606-SP-25

LOG CROSS SECTION OF NEARBY WELLS



APPLICANT: DOLPHIN ENERGY CORPORATION
GARFIELD COUNTY/UN-NAMED FIELD

CAUSE NO. 191
DOCKET NO. 0606-SP-25

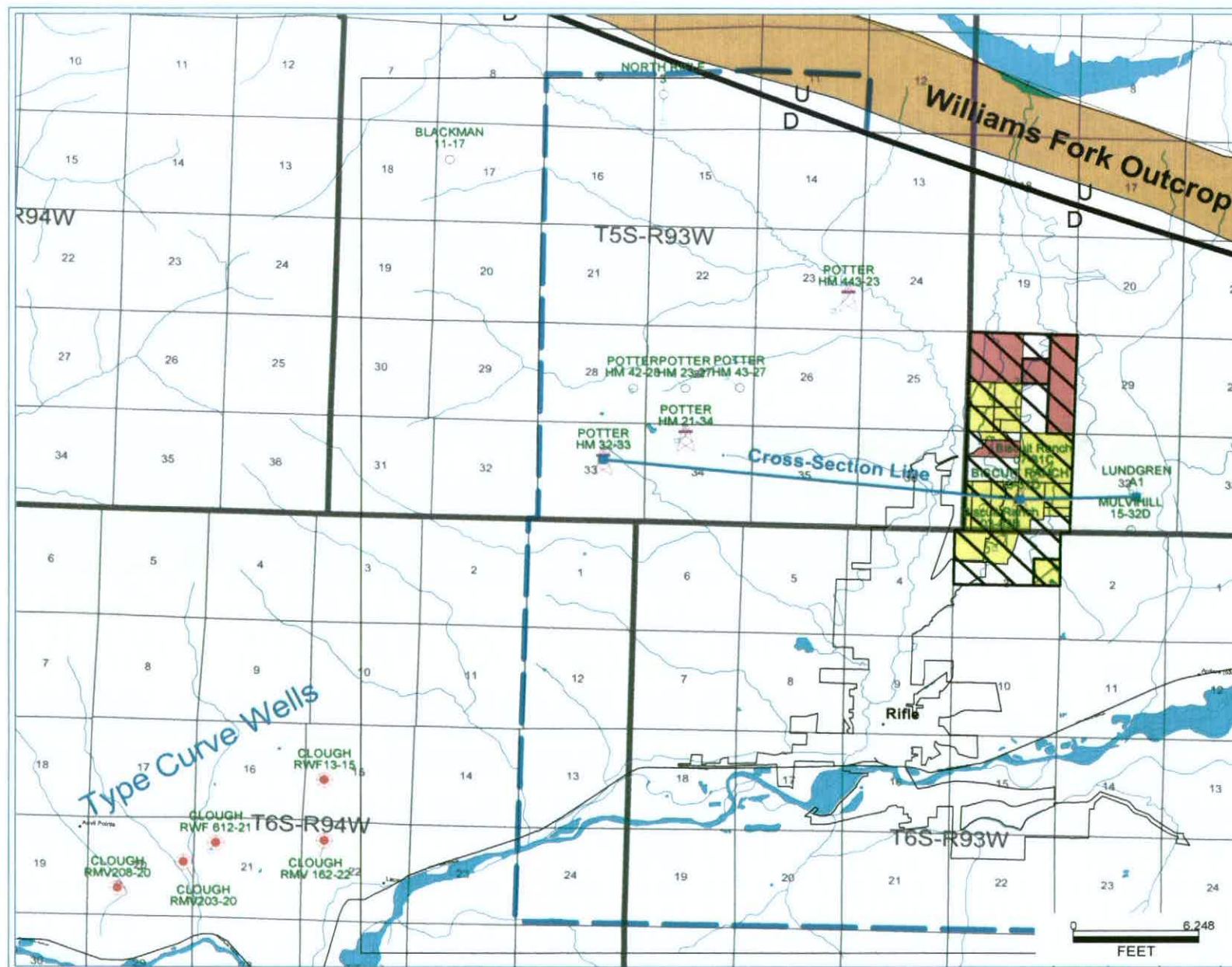
This topographic map depicts the Rifle, Colorado area, featuring the Williams Fork Outcrop and the T5S R93W and T6S R93W townships. The map includes a grid of section numbers (e.g., 12, 13, 14, 15, 16, 17, 18, 19, 20, 21, 22, 23, 24, 25, 26, 27, 28, 29, 30, 31, 32, 33, 34, 35, 36, 37, 38, 39, 40, 41, 42, 43, 44, 45, 46, 47, 48, 49, 50, 51, 52, 53, 54, 55, 56, 57, 58, 59, 60, 61, 62, 63, 64, 65, 66, 67, 68, 69, 70, 71, 72, 73, 74, 75, 76, 77, 78, 79, 80, 81, 82, 83, 84, 85, 86, 87, 88, 89, 90, 91, 92, 93, 94, 95, 96, 97, 98, 99, 100) and a scale bar in feet (0 to 5,462). A cross-section line is drawn across the map, and the town of Rifle is labeled. The map also shows the Williams Fork Outcrop and the T5S R93W and T6S R93W townships. The map includes a grid of section numbers (e.g., 12, 13, 14, 15, 16, 17, 18, 19, 20, 21, 22, 23, 24, 25, 26, 27, 28, 29, 30, 31, 32, 33, 34, 35, 36, 37, 38, 39, 40, 41, 42, 43, 44, 45, 46, 47, 48, 49, 50, 51, 52, 53, 54, 55, 56, 57, 58, 59, 60, 61, 62, 63, 64, 65, 66, 67, 68, 69, 70, 71, 72, 73, 74, 75, 76, 77, 78, 79, 80, 81, 82, 83, 84, 85, 86, 87, 88, 89, 90, 91, 92, 93, 94, 95, 96, 97, 98, 99, 100) and a scale bar in feet (0 to 5,462). A cross-section line is drawn across the map, and the town of Rifle is labeled. The map also shows the Williams Fork Outcrop and the T5S R93W and T6S R93W townships.

APPLICANT: DOLPHIN ENERGY CORPORATION
GARFIELD COUNTY/UN-NAMED FIELD

EXHIBIT N

CAUSE NO. 191
DOCKET NO. 0606-SP-25

WELL LOCATION MAP – PRODUCTION ANALYSIS



APPLICANT: DOLPHIN ENERGY CORPORATION
GARFIELD COUNTY/UN-NAMED FIELD

EXHIBIT O

CAUSE NO. 191
DOCKET NO. 0606-SP-25

Biscuit Ranch Area Bubble Map of Cumulative Gas Production

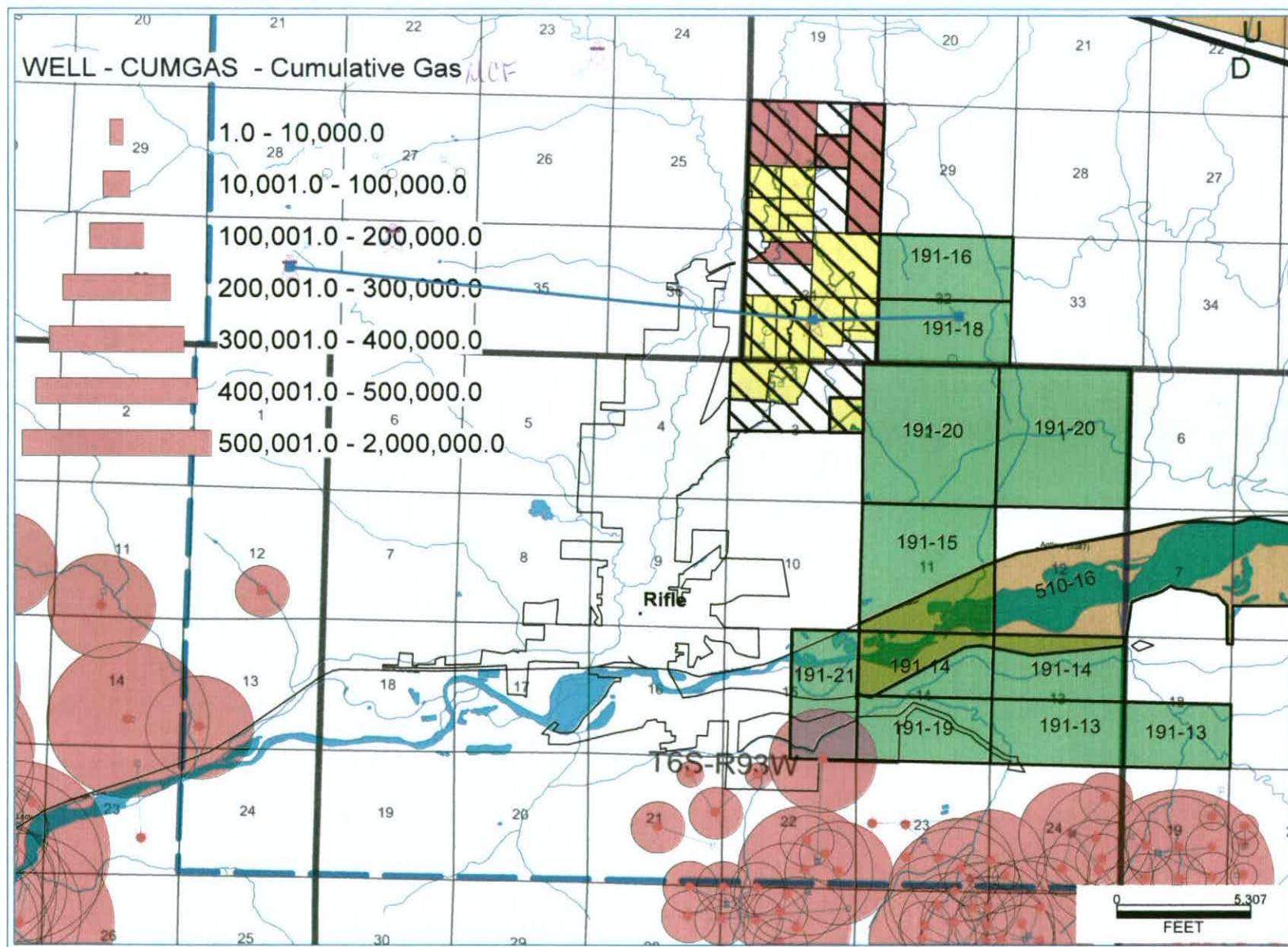
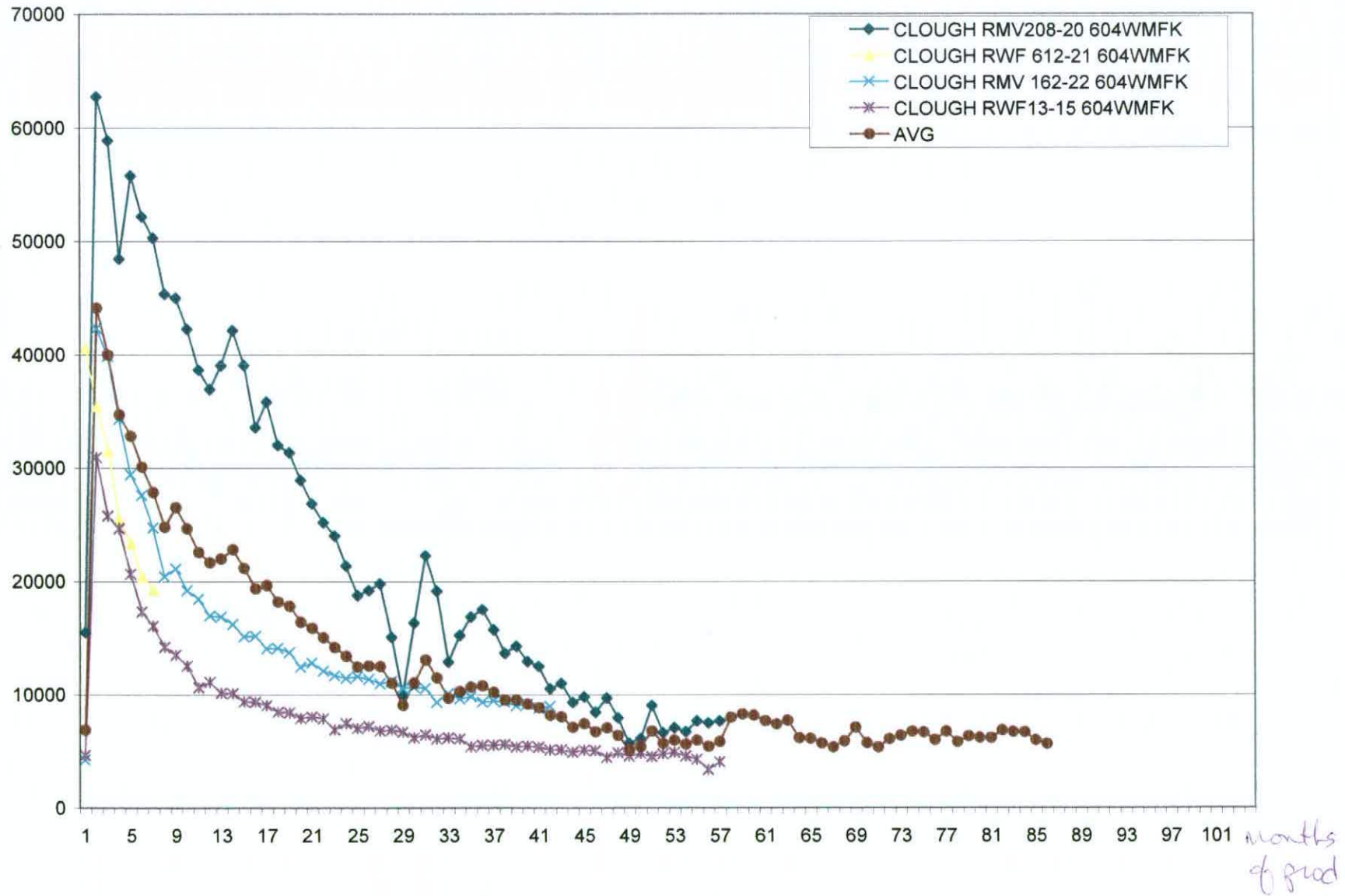


EXHIBIT Q

APPLICANT: DOLPHIN ENERGY CORPORATION
GARFIELD COUNTY/UN-NAMED FIELD

CAUSE NO. 191
DOCKET NO. 0606-SP-25



APPLICANT: DOLPHIN ENERGY CORPORATION
GARFIELD COUNTY/UN-NAMED FIELD

EXHIBIT R

CAUSE NO. 191
DOCKET NO. 0606-SP-25

TYPE CURVE FORECAST

