



Remed 3749

**Ferguson, Randall**

---

**From:** Schneider, Paul [Paul.Schneider@anadarko.com]  
**Sent:** Monday, September 18, 2006 9:07 AM  
**To:** Ferguson, Randall; John Cocroft  
**Subject:** Directions to UPRR 41 Pan Am K #2

Just in case you guys need directions for tomorrow's onsite meeting...

WCR 36 & 15, N ~1/4 mi, east side

Paul Schneider  
Staff Environmental Specialist  
Anadarko Petroleum Corp.  
720-264-2715 (office)  
303-868-6665 (cell)

\*Please note my E-Mail Address has changed. Please  
update your contact list\*

---

**Anadarko Confidentiality Notice:**

**This electronic transmission and any attached documents or other writings are intended only for the person or entity to which it is addressed and may contain information that is privileged, confidential or otherwise protected from disclosure. If you have received this communication in error, please immediately notify sender by return e-mail and destroy the communication. Any disclosure, copying, distribution or the taking of any action concerning the contents of this communication or any attachments by anyone other than the named recipient is strictly prohibited.**

## COGIS - WELL Information

### Scout Card


[Related](#)

[Insp.](#)

[MIT](#)

[GIS](#)

[Doc](#)

[Wellbore](#)

[Order](#)

### Surface Location Data for API # 05-123-14981

Status: PR

Well Name/No: [UPRR 41 PAN AM "K" #2](#) (click well name for production)

Operator: KERR-MCGEE ROCKY MOUNTAIN CORPORATION - 47120

Status Date: 12/14/1999

Federal or State Lease #:

County: WELD #123

Location:

NWSW 5 3N 67W 6

Field: WATTENBERG - #90750

Footages:

1386 FSL 1293 FWL

Elevation:

4,854 ft.

Lat/Long: 40.251565/-104.918715

Lat/Long Qualifier:

Planned based on Foc

### Wellbore Data for Sidetrack #00

Status: PR 12/14/1999

Spud Date: N/A

Spud Date is:

PLANNED

### Wellbore Permit

Permit #: 20042495

Expiration Date:

11/14/2005

Prop Depth/Form: 7932

Surface Mineral Owner Same:

N

Mineral Owner: FEE

Surface Owner:

FEE

Unit:

Unit Number:

Formation and Spacing: Code: JSND , Formation: J SAND , Order: 0 , Unit Acreage: 320, Drill Unit: W2

Formation and Spacing: Code: NB-CD , Formation: NIOBRARA-CODELL , Order: 407 , Unit Acreage: 160, Drill

Casing: String Type: SURF , Hole Size: 12.25, Size: 8.625, Top: , Depth: 524, Weight: 24

Cement: Sacks: 350, Top: 0, Bottom: 524, Method Grade:

Casing: String Type: 1ST , Hole Size: 7.875, Size: 5.5, Top: , Depth: 7927, Weight: 17

Cement: Sacks: 343, Top: 5180, Bottom: 7927, Method Grade:

Casing: String Type: 1ST LINER , Hole Size: , Size: , Top: , Depth: , Weight:

Cement: Sacks: 365, Top: 3904, Bottom: 4764, Method Grade:

### Wellbore Completed

Completion Date: 7/24/1991

Measured TD: 7932

Measured PB depth:

7887

True Vertical TD: 0

True Vertical PB depth:

Casing: String Type: SURF , Hole Size: 12.25, Size: 8.625, Top: 0, Depth: 539, Weight:

Cement: Sacks: 350, Top: 0, Bottom: , Method Grade:

Casing: String Type: 1ST , Hole Size: 7.875, Size: 5.5, Top: 0, Depth: 7927, Weight:

Cement: Sacks: 0, Top: 0, Bottom: , Method Grade:

### Formation

### Log Top

### Log Bottom

### Cored

SUSSEX

4010

SHANNON

4560

NIOBRARA

6850

CODELL

7175

J SAND

7620

DAKOTA

7812

### Completed information for formation JSND

1st Production Date: N/A

Choke Size:

Status Date: 12/14/1999

Hole Completion:

N

Commingled: N

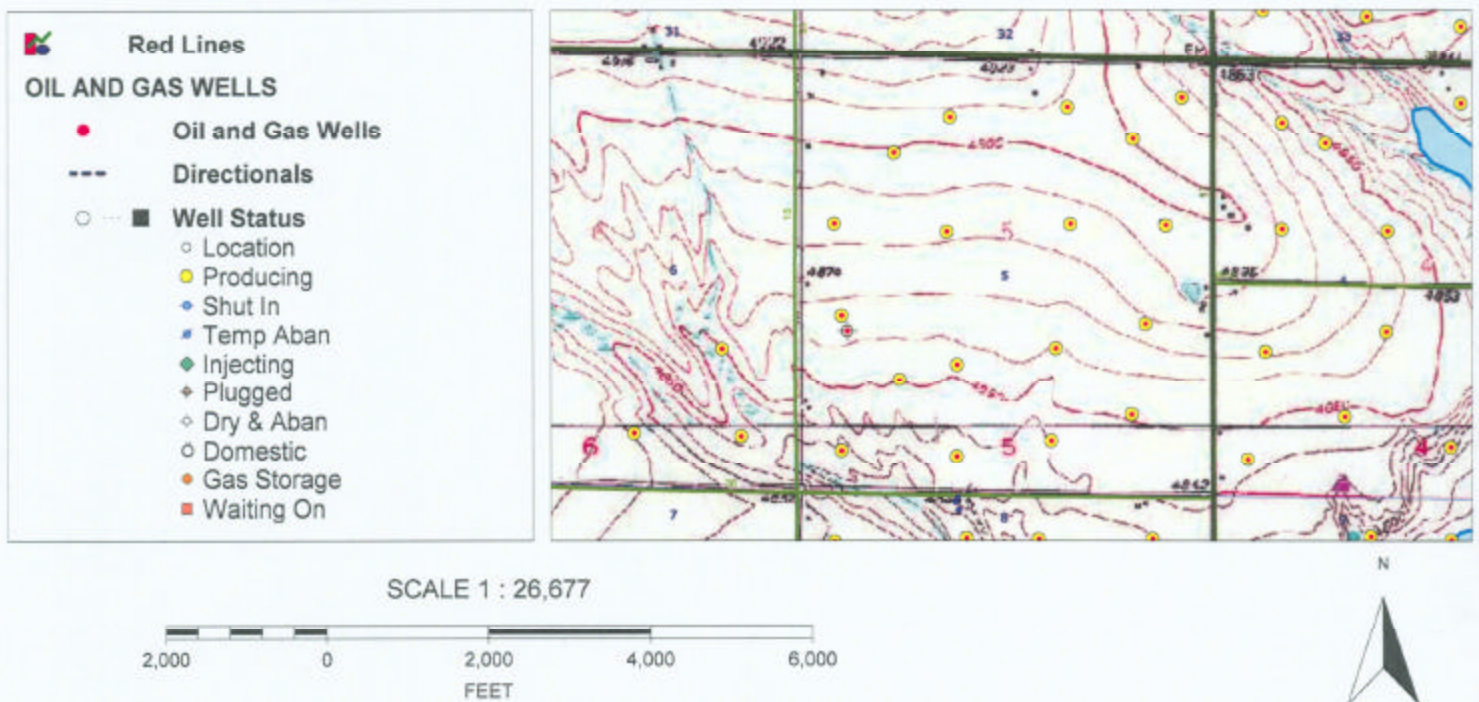
Production Method:

Formation Name: J SAND

Status:

PR

# COGCC GIS Online





UPRR 41 PAN AM "K" #2  
NWSW SEC.5-T3N-R67W

WELD CO., COLORADO  
RD 15 RD 36, N 1/8, E INTO

**DANGER**  
**HIGH PRESSURE GAS**

EXCESSIVE PRESSURE GAS

EXCESSIVE PRESSURE GAS

EXCESSIVE PRESSURE GAS

EXCESSIVE PRESSURE GAS

EXCESSIVE PRESSURE GAS

EXCESSIVE PRESSURE GAS

EXCESSIVE PRESSURE GAS

EXCESSIVE PRESSURE GAS

EXCESSIVE PRESSURE GAS

EXCESSIVE PRESSURE GAS

EXCESSIVE PRESSURE GAS

EXCESSIVE PRESSURE GAS

EXCESSIVE PRESSURE GAS

EXCESSIVE PRESSURE GAS

EXCESSIVE PRESSURE GAS

EXCESSIVE PRESSURE GAS

EXCESSIVE PRESSURE GAS

EXCESSIVE PRESSURE GAS

EXCESSIVE PRESSURE GAS

EXCESSIVE PRESSURE GAS

EXCESSIVE PRESSURE GAS

EXCESSIVE PRESSURE GAS

EXCESSIVE PRESSURE GAS

EXCESSIVE PRESSURE GAS

EXCESSIVE PRESSURE GAS

EXCESSIVE PRESSURE GAS

EXCESSIVE PRESSURE GAS

EXCESSIVE PRESSURE GAS

EXCESSIVE PRESSURE GAS

EXCESSIVE PRESSURE GAS

EXCESSIVE PRESSURE GAS

EXCESSIVE PRESSURE GAS

EXCESSIVE PRESSURE GAS

EXCESSIVE PRESSURE GAS

EXCESSIVE PRESSURE GAS

EXCESSIVE PRESSURE GAS

EXCESSIVE PRESSURE GAS

EXCESSIVE PRESSURE GAS

EXCESSIVE PRESSURE GAS

EXCESSIVE PRESSURE GAS

EXCESSIVE PRESSURE GAS

EXCESSIVE PRESSURE GAS

EXCESSIVE PRESSURE GAS

EXCESSIVE PRESSURE GAS

EXCESSIVE PRESSURE GAS

EXCESSIVE PRESSURE GAS

EXCESSIVE PRESSURE GAS

EXCESSIVE PRESSURE GAS

EXCESSIVE PRESSURE GAS

**IN CASE OF  
EMERGENCY CALL:  
(970) 330-0614**

IN CASE OF FIRE OR MEDICAL EMERGENCY CALL 911



