

COGIS - WELL Information



02084328

1935

Scout Card

[Related](#)[Insp.](#)[MIT](#)[GIS](#)[Doc](#)[Wellbore](#)[Orders](#)

Surface Location Data for API # 05-087-40031

Status: PA

Well Name/No: [LEONA BUTTERS #1](#)

(click well name for production)

Operator: OHIO OIL - 65108

Status Date: 11/13/1974

County: MORGAN #087

Field: GREASEWOOD - #32300

DRLG Contr #:

Lat: 40.497275

Federal or State Lease #:

Location:

SWSW 7 6N 60W 6 PM

Footages:

600 FSL 660 FWL

Elevation:

4,703 ft.

Long:

-104.144523

Wellbore Data for Sidetrack #00

Status: PA

11/13/1974

Spud Date: 6/20/1932

Spud Date is:

ACTUAL

Wellbore Permit

Permit #: 19320000

Expiration Date:

10/20/1932

Prop Depth/Form:

Surface Mineral Owner Same:

Mineral Owner: FEE

Surface Owner:

Unit:

Unit Number:

Wellbore Completed

Complt Date: 11/15/1932

Measured TD: 6764

Measured PB depth:

6700

True Vertical TD:

True Vertical PB depth:

Log Types:

Casing: String Type: SURF , Hole Size: , Size: 15.5, Top: , Depth: 270, Weight:

Cement: Sacks: , Top: , Bottom: , Method Grade:

Casing: String Type: 1ST , Hole Size: , Size: 9.625, Top: , Depth: 3480, Weight:

Cement: Sacks: , Top: , Bottom: , Method Grade:

Casing: String Type: 2ND , Hole Size: , Size: 7, Top: , Depth: 6680, Weight:

Cement: Sacks: , Top: , Bottom: , Method Grade:

Casing: String Type: 1ST LINER , Hole Size: , Size: , Top: , Depth: 6738, Weight:

Cement: Sacks: , Top: , Bottom: , Method Grade:

Formation

Log Top

Log Bottom

Cored

DSTs

FOX HILLS

0

HYGIENE

3210

TIMPAS

6271

MUDDY

6680

DAKOTA

6758

Completed information for formation MDDY

1st Prod Date: 11/15/1932

Choke Size:

Status Date: 11/13/1974

Hole Compl:

Commingled: N

Prod Metod:

Formation Name: MUDDY

Status:

PA

Formation Treatment:

Tubing Size:

Tubing Setting Depth:

Tubing Packer Depth:

Tubing Multiple Packer:

Open Hole Top:

Open Hole Bottom:

Initial Test Data:

Test Date: 11/15/1932

Test Method:

FLOWING

Gas Dispo:

Test Type

Measure

BBLS_OIL

5

No Perforation Data was found for formation MDDY .









SW 7 - 6N-60W

[Send To Printer](#)

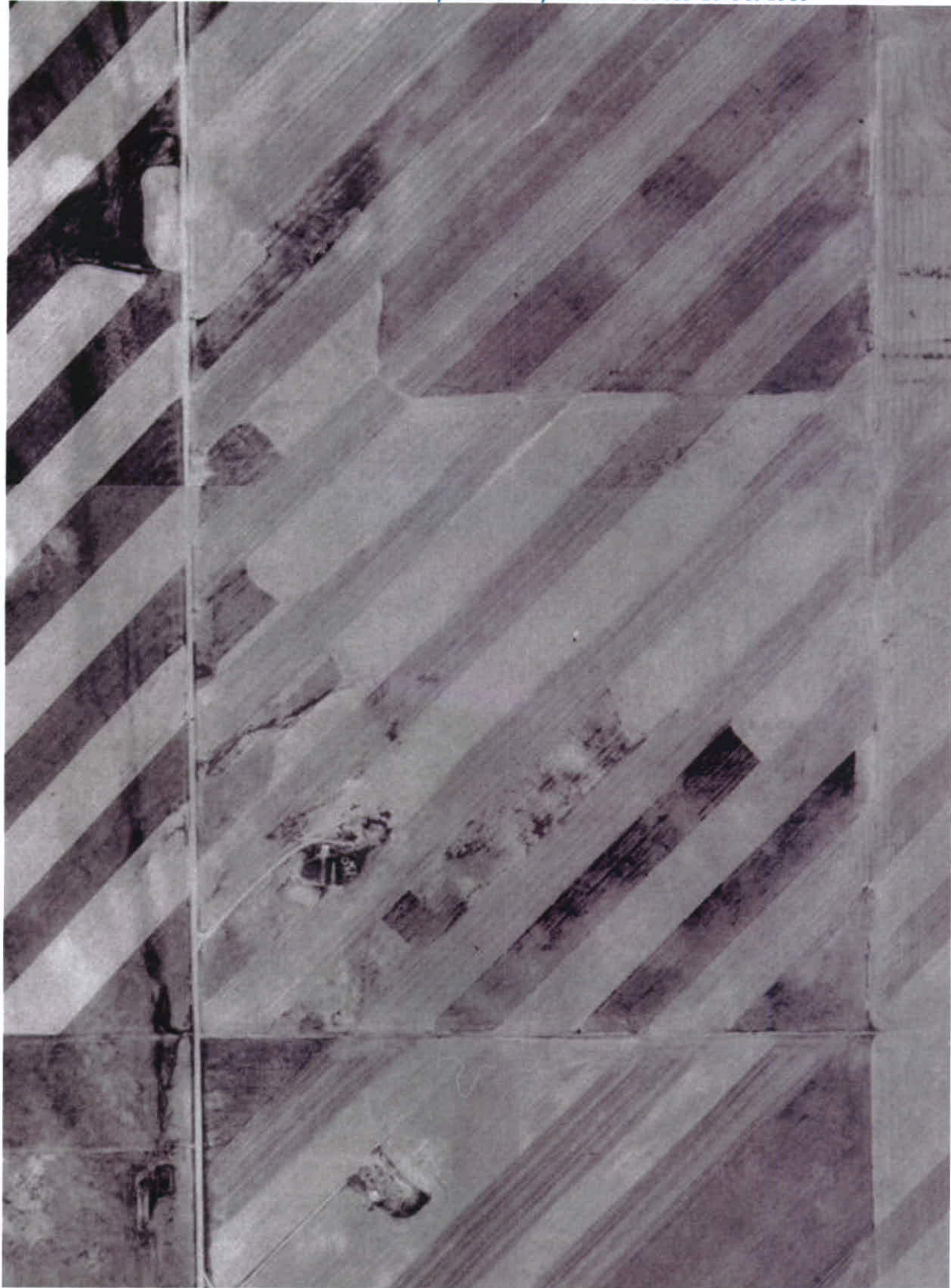
[Back To TerraServer](#)

[Change to 11x17 Print Size](#)

[Show Grid Lines](#)

[Change to Landscape](#)

USGS 110 km NE of Denver, Colorado, United States 10 Oct 1989



0 200M

0 200yd

Image courtesy of the U.S. Geological Survey

© 2004 Microsoft Corporation.

[Terms of Use](#)

[Privacy Statement](#)

7-6N-60W

[Send To Printer](#)

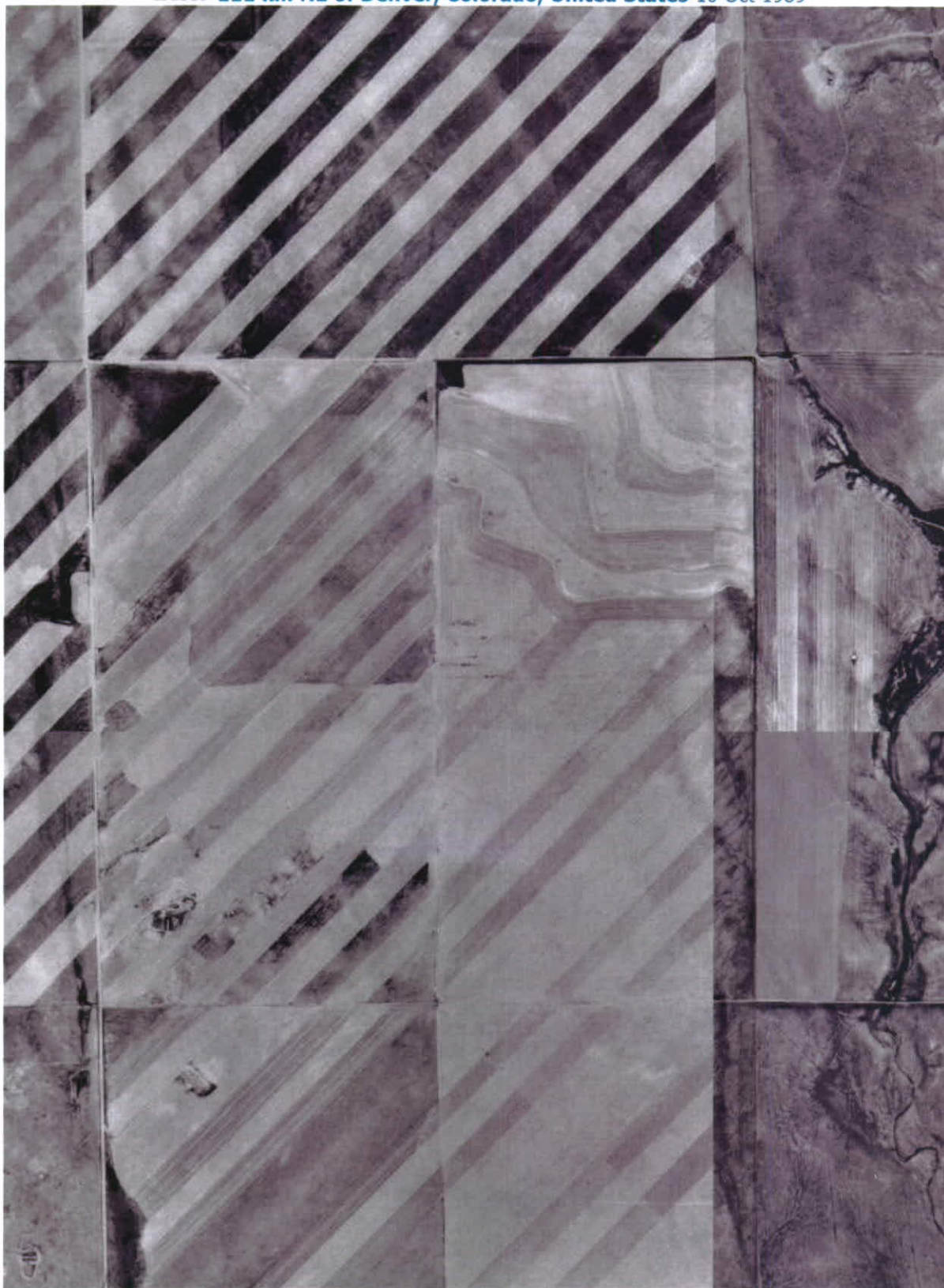
[Back To TerraServer](#)

[Change to 11x17 Print Size](#)

[Show Grid Lines](#)

[Change to Landscape](#)

USGS 111 km NE of Denver, Colorado, United States 10 Oct 1989



0 1 2 3 4 5 Km

0 1 2 3 4 5 Mi

Image courtesy of the U.S. Geological Survey

© 2004 Microsoft Corporation.

[Terms of Use](#)

[Privacy Statement](#)

