

Remed # 1768  
appendix B + C

5/27/2003

PHASE I ENVIRONMENTAL SITE ASSESSMENT  
Proposed Walgreen Store Location  
SEC of 35th Avenue and 37th Street  
Evans, Colorado



---

**APPENDIX B**  
**SITE PHOTOGRAPHS**

PHASE I ENVIRONMENTAL SITE ASSESSMENT  
Proposed Walgreen Store Location  
SEC of 35<sup>th</sup> Avenue and 37<sup>th</sup> Street  
Evans, Colorado

---



Photo #1: View of the site from 35<sup>th</sup> Avenue and 37<sup>th</sup> Street, looking southeast.



Photo #2: View of site and adjacent property to the east from 37<sup>th</sup> Street looking southwest.



PHASE I ENVIRONMENTAL SITE ASSESSMENT  
Proposed Walgreen Store Location  
SEC of 35<sup>th</sup> Avenue and 37<sup>th</sup> Street  
Evans, Colorado

---



Photo #3: View of site and residential properties to the south, looking south.



Photo #4: View of site and strip mall and trailer park north of the site, looking north.



PHASE I ENVIRONMENTAL SITE ASSESSMENT  
Proposed Walgreen Store Location  
SEC of 35<sup>th</sup> Avenue and 37<sup>th</sup> Street  
Evans, Colorado

---



Photo #5: View of the property south of the site and property east of the site, looking east.



Photo #6: View of 35<sup>th</sup> Avenue and agricultural property west of the site, looking west.



PHASE I ENVIRONMENTAL SITE ASSESSMENT  
Proposed Walgreen Store Location  
SEC of 35<sup>th</sup> Avenue and 37<sup>th</sup> Street  
Evans, Colorado

---



Photo #7: View of man-made retention pond and residential properties south of the site, looking south.



Photo #8: View of the temporary storage tank and pressure vessel on the property to the south of the site, looking southeast.

Remed # 1768

PHASE I ENVIRONMENTAL SITE ASSESSMENT  
Proposed Walgreen Store Location  
SEC of 35th Avenue and 37th Street  
Evans, Colorado

---

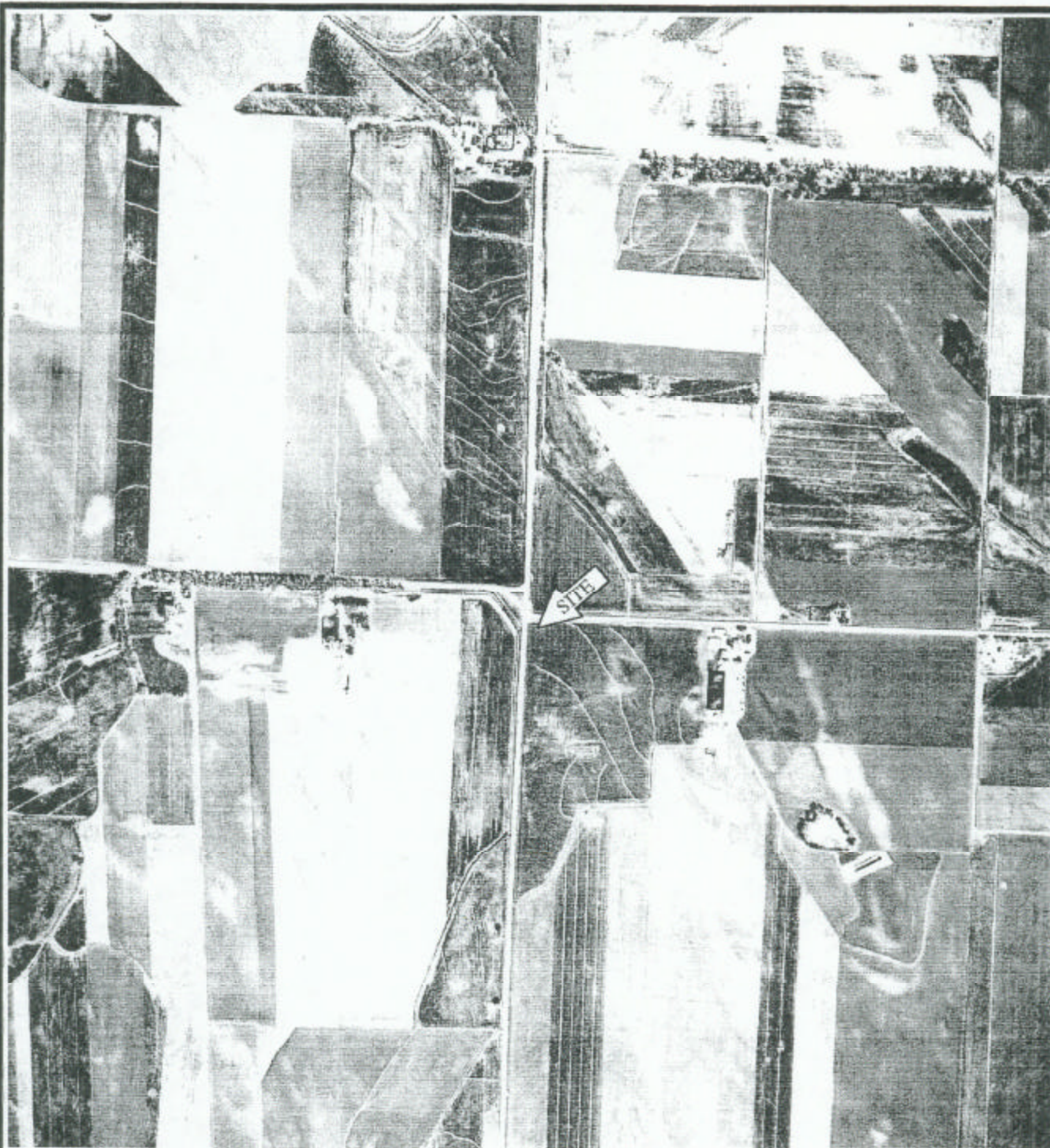
**APPENDIX C**

**AERIAL PHOTOGRAPHS**

**Figure C-1: 1952 Aerial Photograph**

**Figure C-2: 2002 Aerial Photograph**





6746 South Revere  
Parkway, Suite 180  
Englewood, Colorado 80112

PROJECT NO: 11.18067.1353 (TASK 35001)

DESIGNED BY: ATC

SCALE: UNK

REVIEWED BY: SB

DRAWN BY: JSL

DATE: 04/03

FIG NO: C-1

FIGURE C-1

### 1952 AERIAL PHOTOGRAPH

ASTM PHASE I ENVIRONMENTAL SITE ASSESSMENT

PROPOSED WALGREEN STORE LOCATION  
SOUTHEAST CORNER OF 35<sup>TH</sup> AVENUE AND 37<sup>TH</sup>  
STREET

EVANS, COLORADO 80620





6746 South Revere  
Parkway, Suite 180  
Englewood, Colorado 80112

PROJECT NO: 11.18067.1353 (TASK 35001)

DESIGNED BY: ATC	SCALE: UNK	REVIEWED BY: SB
DRAWN BY: JSL	DATE: 04/03	FIG NO: C-2

FIGURE C-2

**2002 AERIAL PHOTOGRAPH**  
ASTM PHASE I ENVIRONMENTAL SITE ASSESSMENT

PROPOSED WALGREEN STORE LOCATION  
SOUTHEAST CORNER OF 35<sup>TH</sup> AVENUE AND 37<sup>TH</sup>  
STREET  
EVANS, COLORADO 80620