

RNI - FACILITY - COMMERCIAL



01407440

OGEA/POP Aerial Survey

September 22, 2005

Pro #1971

Site Number: CO1

Way Point: 16

Latitude: 40° 08.144'

Longitude: 108° 50.451'

Notes: Apparent land farm, two ponds with dark liquid

~~2N103W Sec 4~~

2N102W -16

40.17333

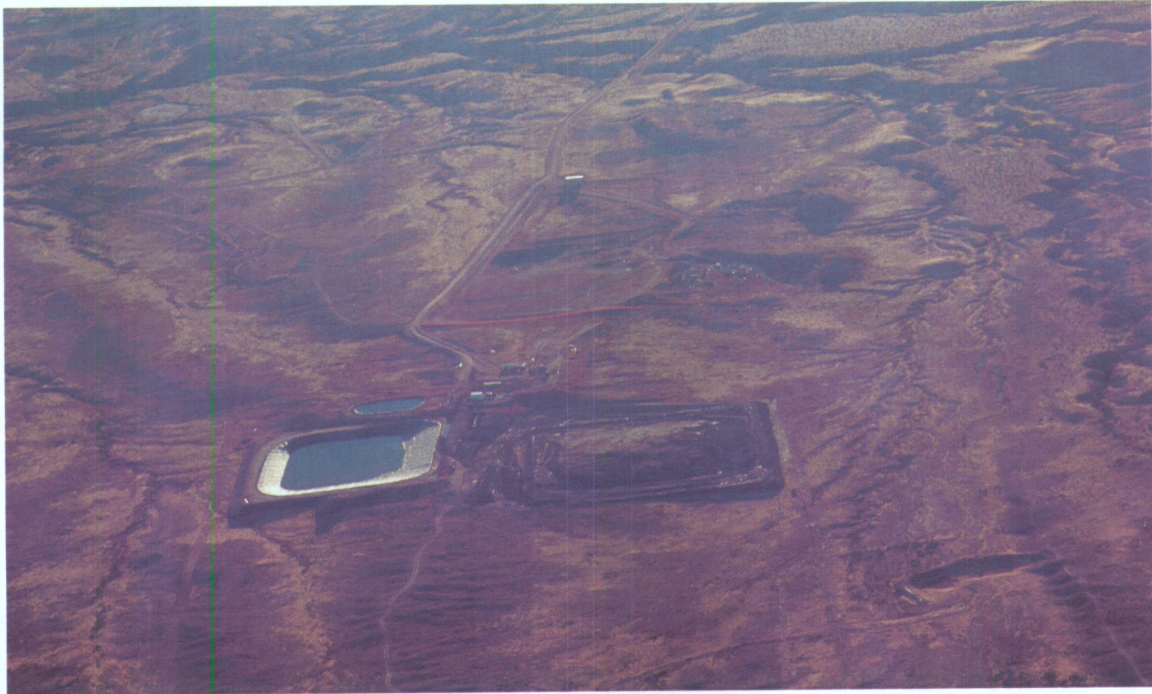
~~108.95861~~

NWSE

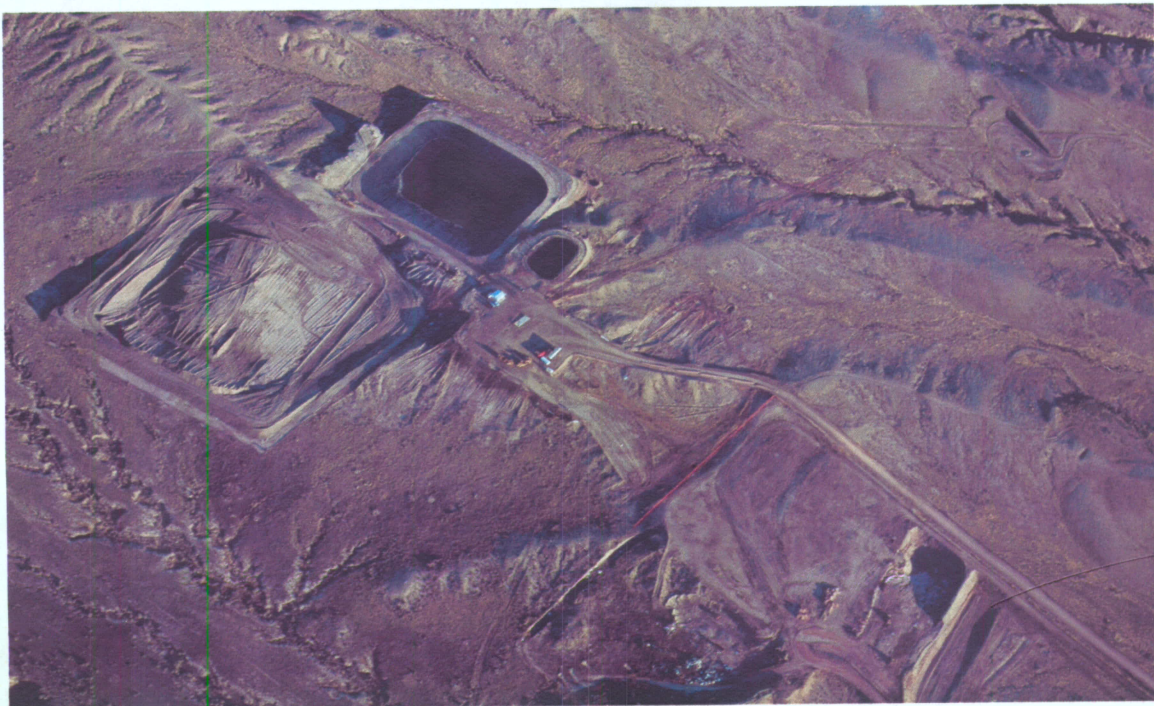
FED

FCC

~~FACILITY POST 6/2006~~



~~NOT~~
OK



Rio Blanco
County
LANDFILL

Barb Blackston - BLM CRAIG 970-826-5097

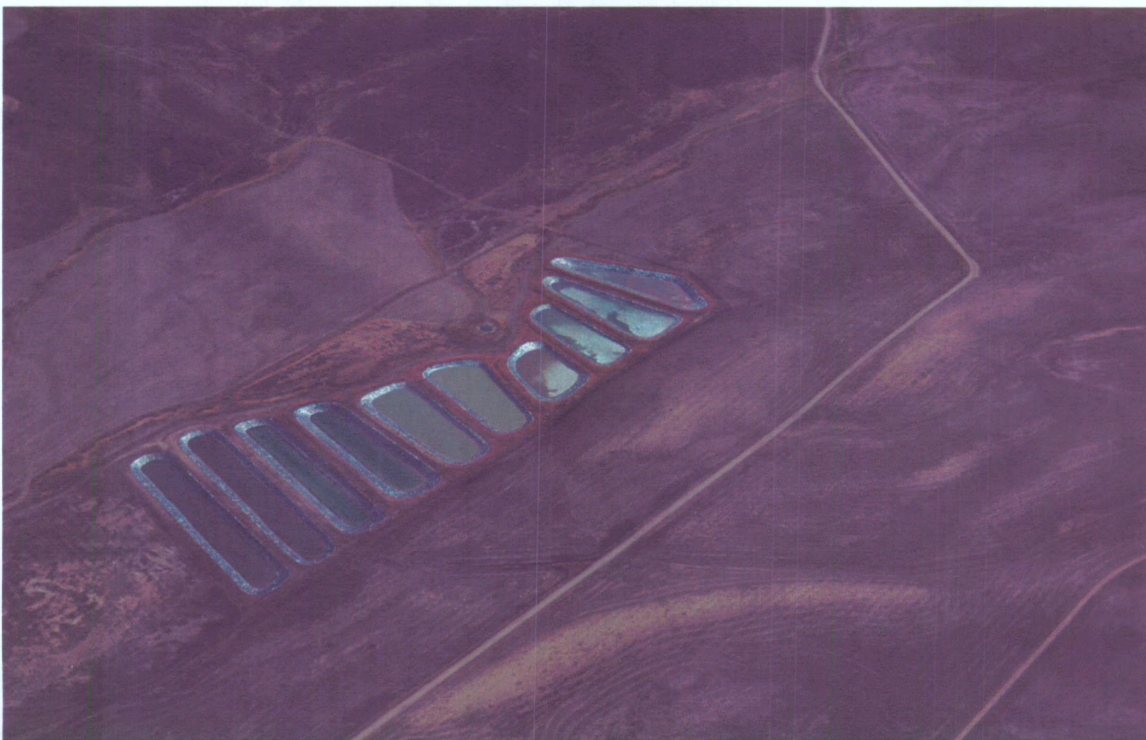
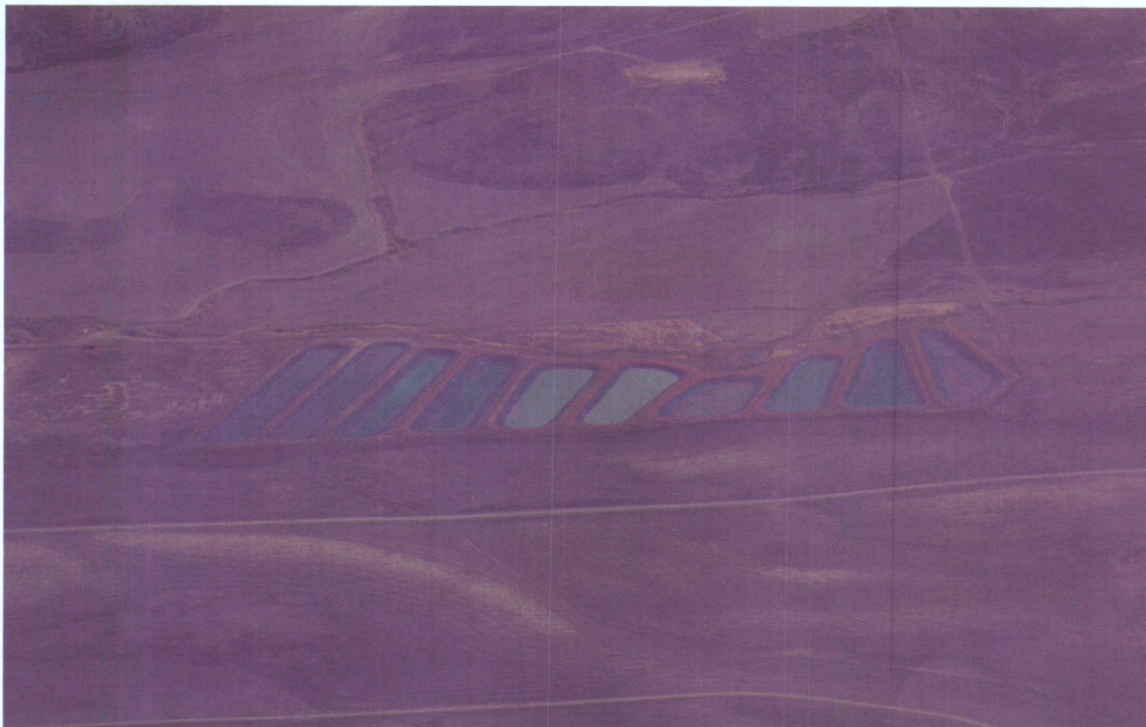
Fred Conrath = " " 970-826-5098

White River - Meeker Co.
Carol followed 970-878-3836

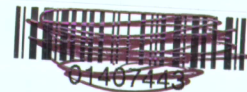
OGEA/POP Aerial Survey

September 23, 2005

Site: Wyman Commercial Facility



OGEA/POP Aerial Survey
September 23, 2005



Site Number: Elk Springs Commercial Facility



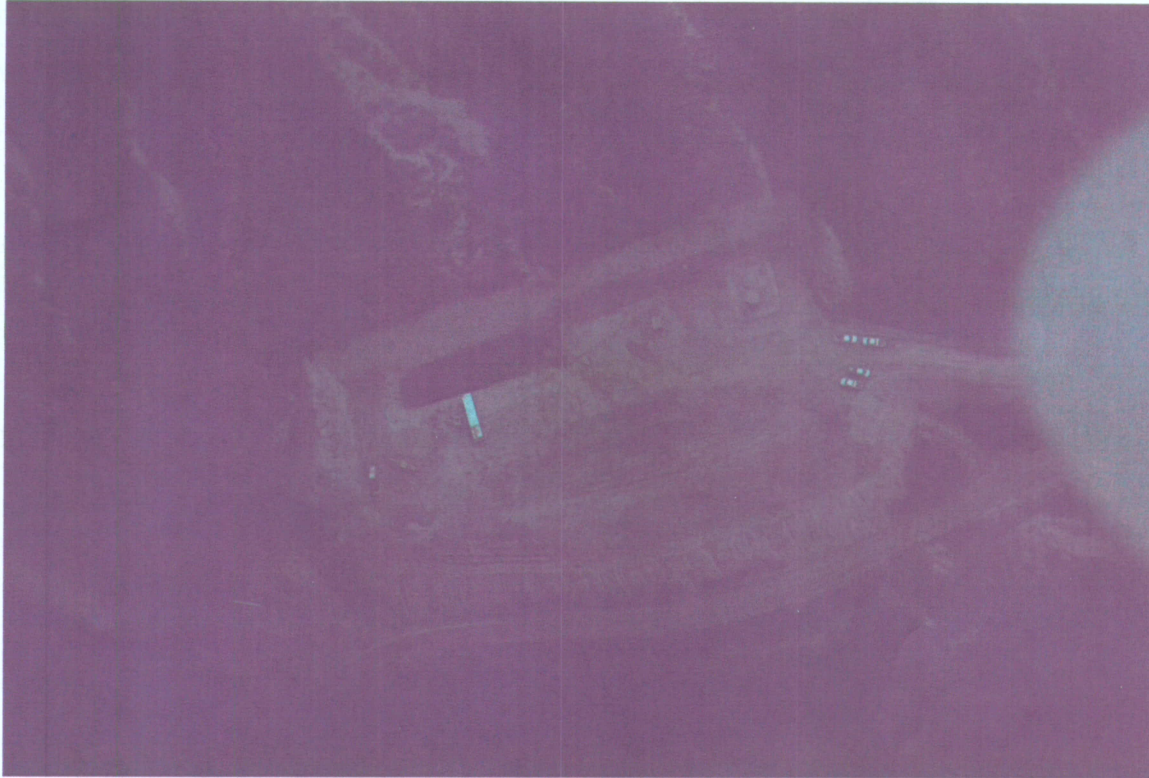
OGEA/POP Aerial Survey

September 23, 2005

Site Number: CO12

Way Point: none taken; located just up the hill from CO11 (up the road)

Notes: Black fluid on pit



OGEA/POP Aerial Survey
September 23, 2005

Site Number: CO11

Way Point: 25

Latitude: 39° 29.424'

39.60111

Longitude: 108° 14.862'

-108.47277

Notes: Black fluid in pit, in a valley NNW of GJT



Oxy site.

-CASCADIA (NY)

6897W-29

OGEA/POP Aerial Survey

September 23, 2005

Site Number: CO10

Way Point: 24

Latitude: 39° 13.740'

Longitude: 108° 10.257'

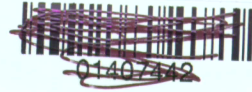
Notes: Commercial Pit from Corbin's list

39.422222
-108.23805



98 57W 36
off Dolee cut-off
- BLK MTN

OGEA/POP Aerial Survey
September 23, 2005



Site Number: CO9

Way Point: 23

Latitude: 39° 23.104'

39.412222

Longitude: 108° 03.528'

-108.19666

Notes: Dark fluid on pond, lots of dark blue (oil field) frac trailers



H-34 Mesa AREA - ECA.

7556W - 31

OGEA/POP Aerial Survey
September 23, 2005

Site Number: CO8

Way Point: 22

Latitude: $39^{\circ} 23.728'$

Longitude: $108^{\circ} 03.241'$

Notes: Dark liquid in pit, two green tanks



HIGH MESA - FCA.

—

7596W-36

OGEA/POP Aerial Survey

September 23, 2005

Site Number: CO7

Way Point: 21

Latitude: $39^{\circ} 23.678'$

39.571667

Longitude: $108^{\circ} 03.680'$

-108.23888

Notes: Dark liquid in pit



High mesa AREA. - ECA

OGEA/POP Aerial Survey

September 23, 2005

Site Number: CO6

Way Point: 20

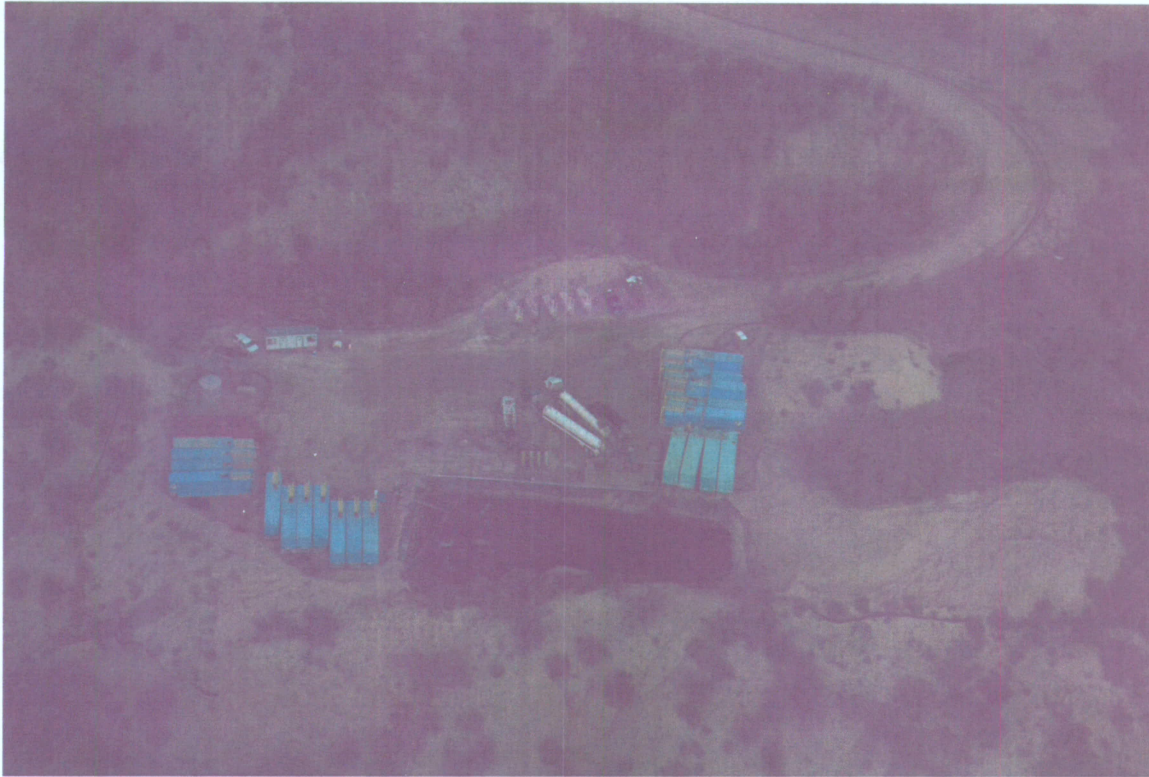
Latitude: $39^{\circ} 23.479'$

39.516389

Longitude: $108^{\circ} 02.926'$

-108.29055

Notes: On mesa S of Battlement Mesa; 5 semi's waiting to dump in this site



new drill in High mesa area - ECA

OGEA/POP Aerial Survey
September 23, 2005

Site Number: CO5

Way Point: 19

Latitude: 39° 28.292'

Longitude: 108° 03.900'

Notes: Commercial-scale facility

~~39.54778~~
~~-108.30000~~



William Parachute Sup. family

6596W - 36.

OGEA/POP Aerial Survey
September 23, 2005

Site Number: CO4

Way Point: 18

Latitude: 39° 30.319'

Longitude: 107° 53.661'

Notes: Commercial-scale facility; it could be for something other than oil

39.588611

-107.9000

NO IDEA

6S94W

23

7 ~~Oil Refinery~~ PLATEAU



6S94W - (24)
(17)

Williams Rifle Evap Facility

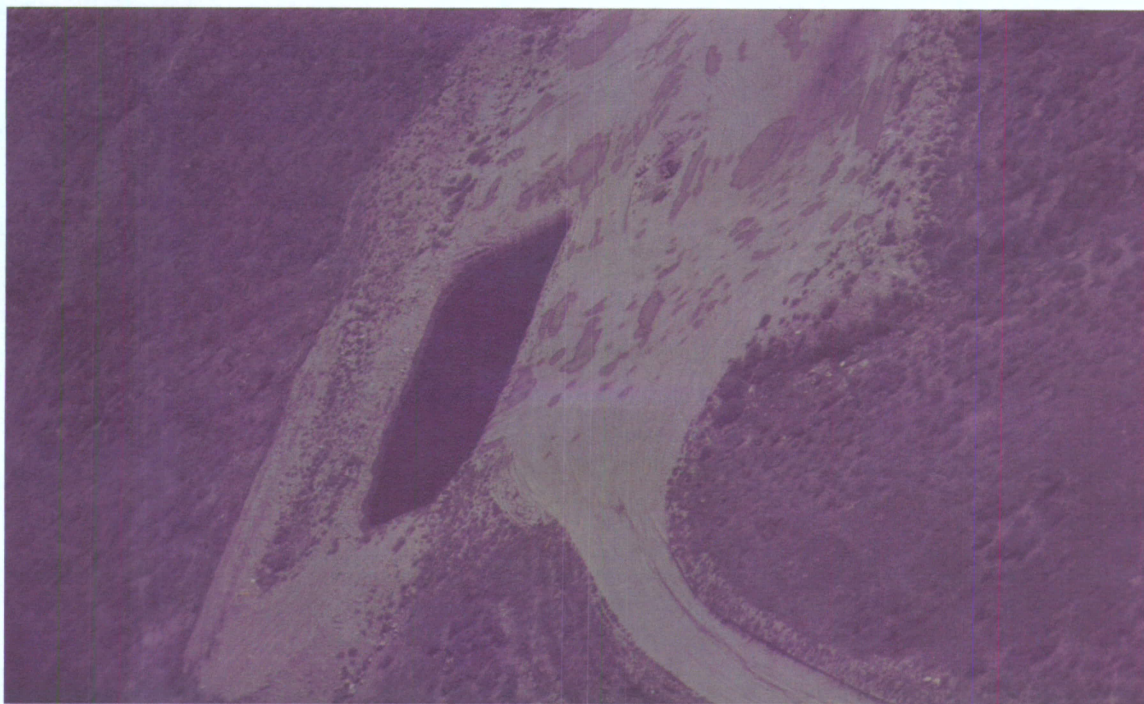
OGEA/POP Aerial Survey

September 23, 2005

Site Number: CO3

Way Point: None taken; located about 500 yards N of CO2

Notes: Black liquid on pit





01407441

~~FED~~
OGEA/POP Aerial Survey
September 23, 2005

Site Number: CO2
Way Point: 17
Latitude: 39° 07.228'
Longitude: 108° 31.286'
Notes: Black liquid on pit

~~HN 1W-1~~

1W1W-31 NWNE

39.180000

~~108.59611~~

NOT OIL & G

ADJACENT TO M. COWLEY
AIRPORT.



Fet Surface

OGEA/POP Aerial Survey

September 22, 2005


Site: Rangely Commercial Pits



COGCC GIS Online

Project #1971

2W 102W
16

 Red Lines

OIL AND GAS WELLS

- Oil / Gas Wells
- Directionals
- Pits (approx locs)
- ■ Well Status
 - Location
 - Producing
 - Shut In
 - Temp Aban
 - ◆ Injecting
 - ⊕ Plugged
 - ◇ Dry & Aban
 - Domestic
 - Gas Storage
 - Waiting On
 - Location
 - ⊗ Aban Loc
 - Unknown
 - Verbal Plugging

Well Name

— — — — —



SCALE 1 : 4,773



COGCC GIS Online

Project #1971



OGEA/POP Aerial Survey
September 23, 2005

Site: "Dixon" Commercial Facility

